

MONTHLY MEMBERSHIP PROGRESS REPORT

LOCATION NORTH DAKOTA

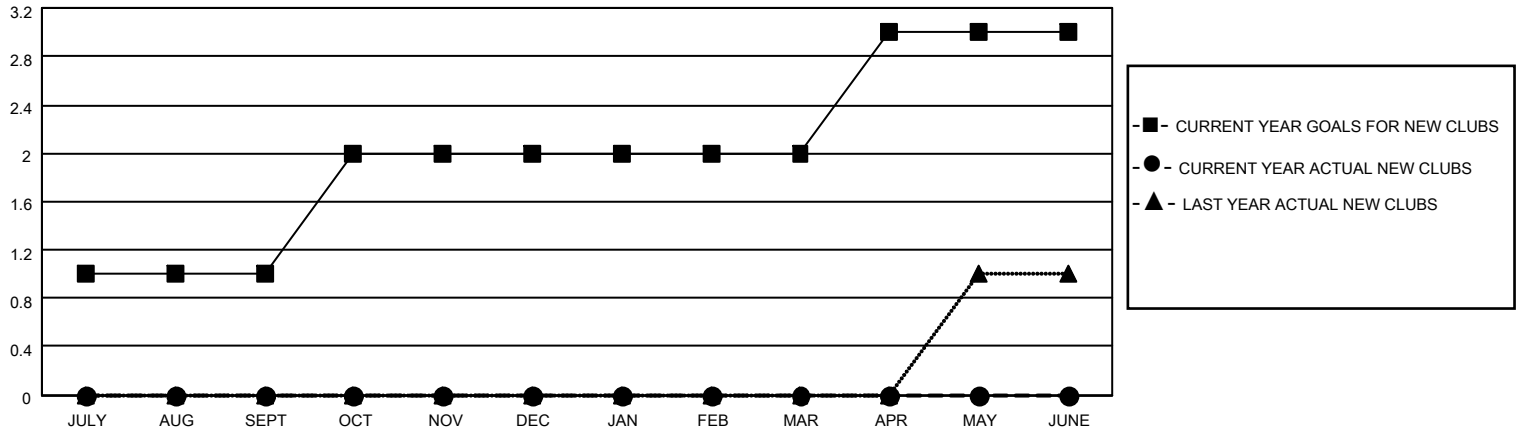
District 5 NW

Results as of: 4/30/2022

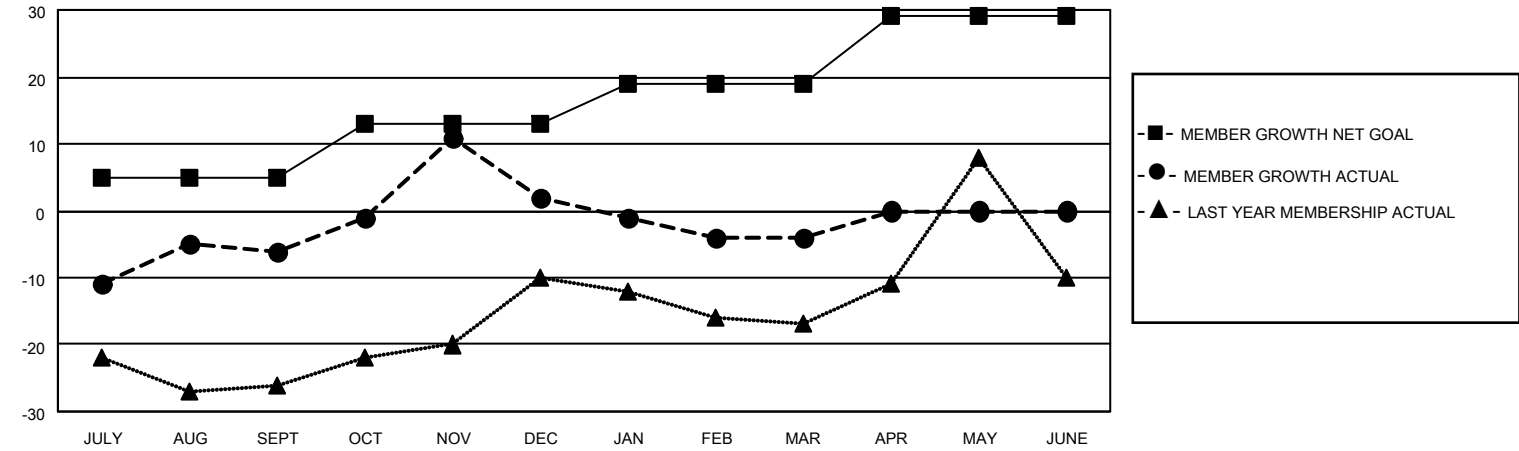
Clubs			
RESULTS FOR 2021-2022			
QUARTER	NEW CLUB GOAL	NEW CLUBS	DROPPED CLUBS
JULY/AUG/SEPT	1	0	0
OCT/NOV/DEC	1	0	1
JAN/FEB/MAR	0	0	0
APR/MAY/JUNE	1	0	0

Members			
RESULTS FOR 2021-2022			
QUARTER	MEMBER GROWTH NET GOAL	MEMBER GROWTH ACTUAL	DROPPED MEMBERS ACTUAL (including transfers)
JULY/AUG/SEPT	5	22	28
OCT/NOV/DEC	8	36	23
JAN/FEB/MAR	6	18	23
APR/MAY/JUNE	10	8	4

GOALS AND ACTUAL NEW CLUBS CUMULATIVE



GOALS AND ACTUAL MEMBERS CUMULATIVE



DROPPED CLUBS: 1

23 CLUBS OF 43 ADDED 1 OR MORE NEW MEMBERS

GENDER DISTRIBUTION

MALE	692 (61.73%)
FEMALE	429 (38.27%)
NON BINARY	0 (0.00%)
PREFER NOT TO ANSWER	0 (0.00%)

DROPPED MEMBERS

[CLICK HERE FOR CUMULATIVE MEMBERSHIP DATA](#)

DECEASED	14
CLUB CANCELLED	0
OTHER	64
TOTAL	78

TOTAL FAMILY UNIT MEMBERS 214

FAMILY MEMBERS PAYING HALF DUES 108